



### INIKA Organic Serum Foundation

25 mL / 0.85 fl oz

A lightweight, buildable foundation that blends seamlessly like a second skin, with a soft matte finish. Enriched with skin-loving Ceramide and Baobab Seed, this nourishing serum helps to replenish and protect the skin's moisture barrier. The feather-light fluid elevates the natural complexion, for a blurred, smooth skin tone.

**Coverage:** medium-full, buildable

#### Key Ingredients:

- Ceramide
- Baobab Seed
- Sunflower Seed



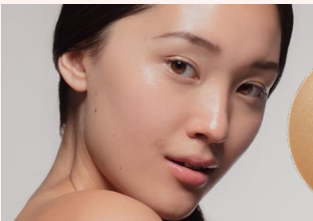
# Serum Foundation Shades



**Bold**  
*Fair skin with yellow undertones*



**Brilliant**  
*Light skin with peach undertones*



**Daring**  
*Light skin with yellow undertones*



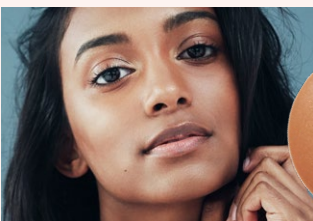
**Fearless**  
*Light skin with neutral undertones*



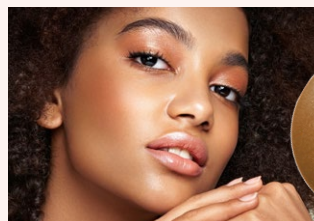
**Gratitude**  
*Medium skin with pink undertones*



**Nourish**  
*Medium skin with golden undertones*



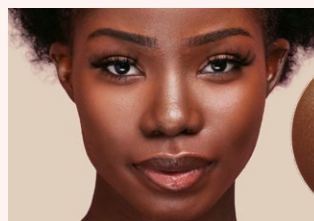
**Purpose**  
*Medium skin with peach undertones*



**Radiant**  
*Medium skin with olive undertones*



**Spirited**  
*Deep skin with neutral undertones*



**Vivid**  
*Deep skin with warm undertones*